



# At Ease 3.0

Now there's a simple, effective, and inexpensive way to share your family Macintosh—while protecting important applications and documents.

Only At Ease 3.0 software from Apple Computer offers this security with a choice of interfaces for every age and experience level. For younger learners and computer novices there's the friendly At Ease desktop. It features large buttons, that can speak, for accessing files and applications, and large folders for keeping everything organized. It lets children work and play independently without your worrying about accidental damage to your files.

Older children can use the standard Macintosh Finder interface, but still under At Ease management to prevent access to unauthorized applications and documents. Finally, you and anyone else you authorize can bypass At Ease and gain access to all of the computer's files and capabilities. At Ease keeps pace with every member of your family.

Each At Ease user has one folder containing approved applications, files, and other items; and one folder for the user's own documents. In version 3.0, each CD or floppy disk also conveniently appears in its own folder.

Easy-to-use setup menus let you quickly designate which desktop each person will use and which applications and documents they can open. Adding an item to a user's folder is quick and easy. You can also control permissions for deleting, copying, and renaming specific files, and you can create a list of allowable CDs to ensure that users access only permitted materials.

Because At Ease software comes from Apple Computer, you're assured that it is designed to work smoothly with your Macintosh. At Ease can be used not only at home, but also on shared, non-networked Macintosh systems in classrooms, small businesses, libraries, and museums.

With At Ease 3.0, you can feel good about sharing your family Macintosh.

## Features

### Flexibility

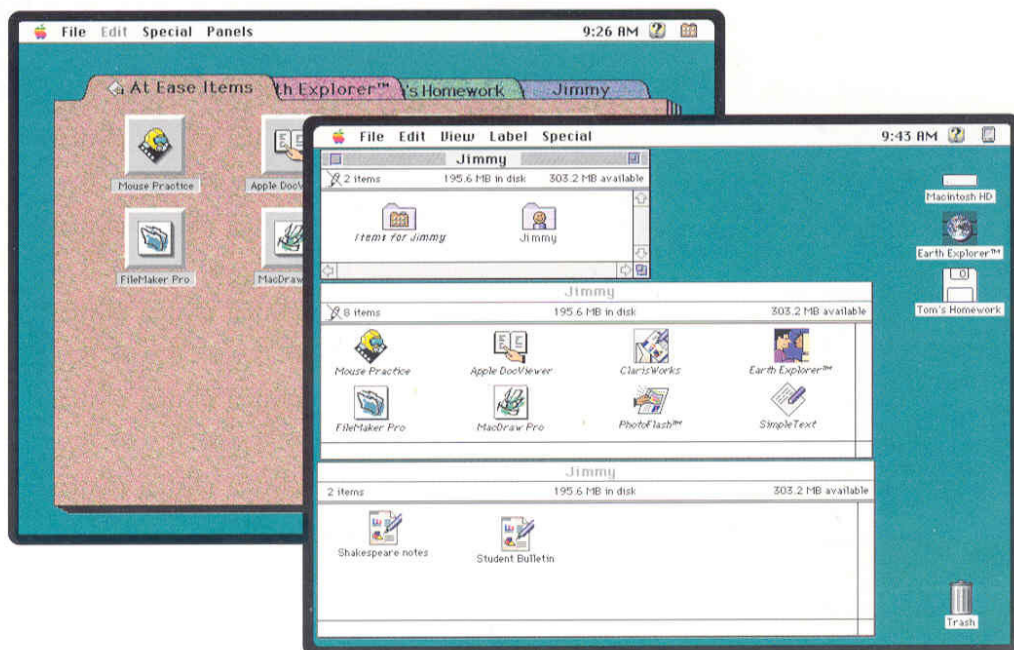
- Simplified At Ease desktop for young or inexperienced users
- Restricted Finder interface for experienced users
- Normal Finder interface for authorized full-access users
- Separate At Ease folder for each CD or floppy disk
- Support for up to 40 different users

### Security

- Designate access to specific applications and documents
- Specify privileges for opening, copying, deleting, and renaming particular files
- Assign individual user passwords
- Authorize the use of individual CDs and their contents
- Block access to the hard disk
- Prevent applications from being launched from floppy disks
- Protect system settings, control panels, and the Chooser

### Ease of use

- Large one-click buttons to access files and applications from the At Ease desktop
- Fast, simple installation and setup
- Talking buttons for nonreaders or those just learning to read
- Single folder for organizing personal documents



Mac OS



# At Ease 3.0

## Ordering Information

### At Ease 3.0

Order No. M1859Z/D

- At Ease software
- Owner's manual

Apple also offers At Ease for Workgroups software for networked systems; contact your Apple sales representative or reseller for more information.

Product specifications are subject to change. Check with your Apple reseller for the most current information about product specifications and configurations.

## Technical Specifications

### Access levels

- At Ease desktop
- Restricted Finder
- Normal Finder

### File and media access

- Manage access to:
  - Applications
  - Documents
  - Hard disk
  - Apple Menu items (desk accessories, Chooser, and control panels)
  - CDs
  - Floppy disks
- Assign separate permissions for opening, copying, deleting, and renaming files

### CD access

- Contents of each disc appear in a separate At Ease folder
- List of allowable CDs can be created
- Within the At Ease desktop, specific portions of a disc can be locked out

### Floppy disk access

- Contents of each floppy disk appear in a separate At Ease folder
- Application-launching from floppy disks can be disabled

### File-saving options

- Users can save documents to a floppy disk and to a private folder on the local hard disk
- Document-saving can be disabled

## Easy setup and maintenance

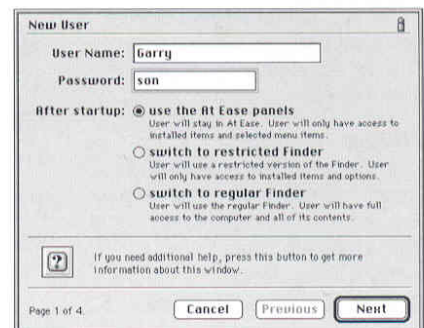
- Setup application provides easy-to-use configuration screens for designating users, items, menus, file locations, and other options
- Apple Guide support gives Macintosh System 7.5 users step-by-step context-sensitive help for using the At Ease desktop and the setup application

## System requirements

- Apple Macintosh, PowerBook, or Power Macintosh computer
- 4MB of RAM
- Macintosh system software version 7.0 or later
- Hard disk
- Apple SuperDrive 1.4MB floppy disk drive



*At Ease 3.0 makes it easier to share your family Macintosh by giving users access to their own At Ease items and documents.*



*At Ease 3.0 uses a simple setup application that guides you through the process of creating an At Ease configuration for each user.*

Apple Computer, Inc.  
1 Infinite Loop  
Cupertino, CA 95014  
(408) 996-1010  
TLX 171-576

© 1995 Apple Computer, Inc. All rights reserved. Apple, the Apple logo, Apple SuperDrive, Macintosh, and PowerBook are trademarks of Apple Computer, Inc., registered in the U.S.A. and other countries. At Ease, Finder, and Power Macintosh are trademarks of Apple Computer, Inc. Mention of non-Apple products is for informational purposes only and constitutes neither an endorsement nor a recommendation. Apple assumes no responsibility with regard to the selection, performance, or use of these products. All understandings, agreements, or warranties, if any, take place between the vendors and the prospective users.  
April 1995. Product specifications are subject to change without notice. Printed in U.S.A.  
L00520B